

Meet

DINO 230T

DINO® TRAILER MOUNTED MEWPs



Standard features in DINO 230T:

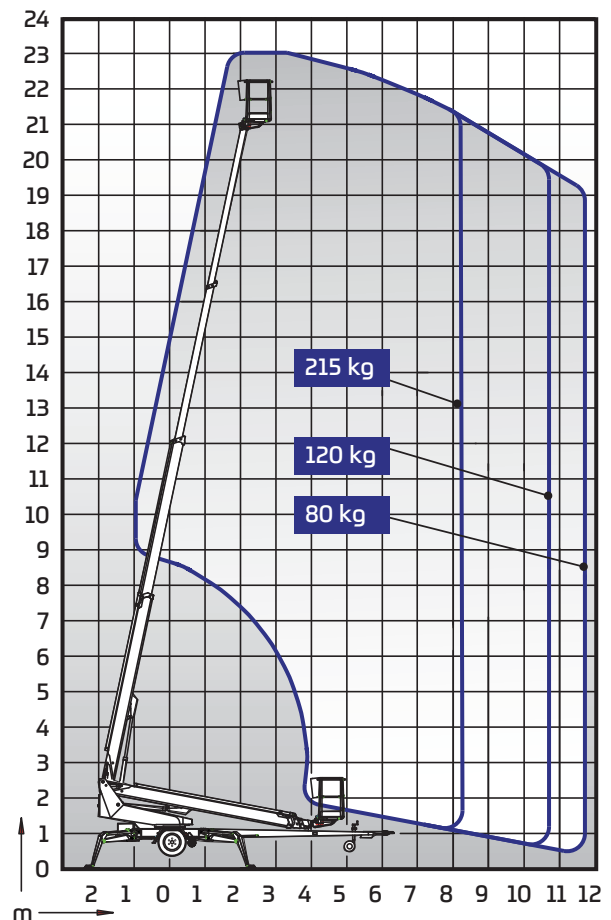
- Driving system; easy to move at work site
- Spider outriggers; great levelling capability in slopy terrain
- Generator as standard; providing a power source for both the platform and tools
- Robust boom; stable movements and large outreach
- Spacious, easy-entry basket; capacity 215 kg
- Large outrigger pads 280 x 360 mm
- Continuous rotation of the boom
- Basket rotation 90°
- Proportional controls
- Stable to tow
- Simple to use, clear and informative controls

Options available for DINO 230T:

- Cable steering for driving
- Outrigger support indicator
- LED working lights
- DINO SafeGuard secondary guarding
- Extra outrigger pads 500 x 500 x 35 mm + bracket
- Lockable tool / harness box
- Rack for tools and accessories
- Spare wheel

Technical data

	230T
Max. working height	23.00 m
Max. platform height	21.00 m
Max. outreach	11.70 m
Support width	4.40 / 4.85 m
Lifting capacity	215 kg
Basket size	0.7 x 1.3 m
Boom rotation	cont.
Basket rotation	90°
Boom control	proport.
Transport length	8.15 m
Transport width	2.05 m
Transport height	2.24 m
Weight	2960 kg
Driving system	std
AC socket in the basket x 2	std
Electro motor	std
Generator pack	std
Gradeability	25 %



DINOLIFT

UP TO THE JOB

DINOLIFT Oy | Raikkolantie 145 • FI-32210 LOIMAA, FINLAND

Tel: +358 (0)20 1772 400 • E-mail: info@dinolift.com

Read more: www.dinolift.com

Technical specifications are subject to change without prior notice.

©Dinolift Oy | 23.5.2017